

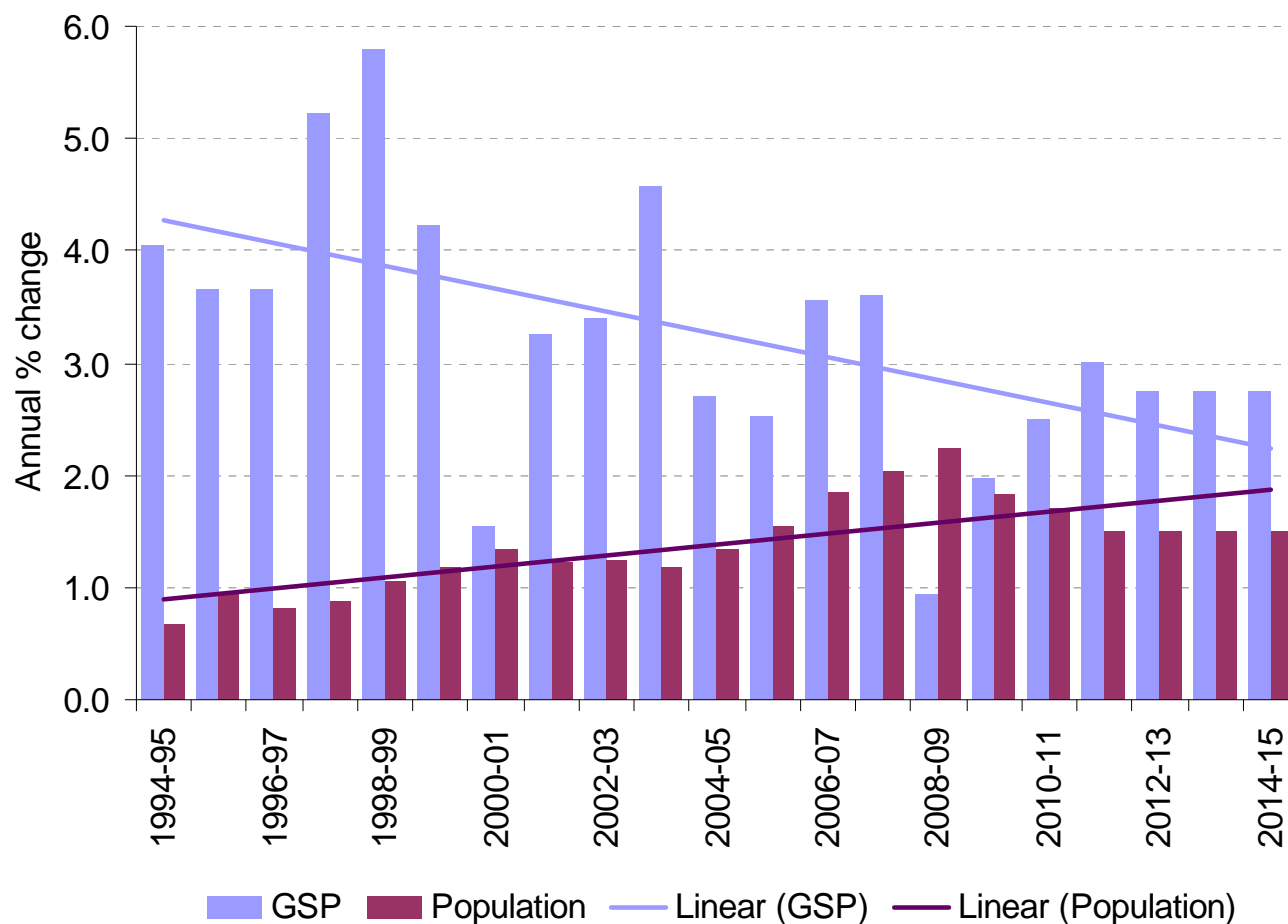
## Major Projects Forum 2011

**Justin Hanney**

Deputy Secretary, Trade and Industry Development  
Department of Business and Innovation

# Population is a key contributor to Victoria's economic growth

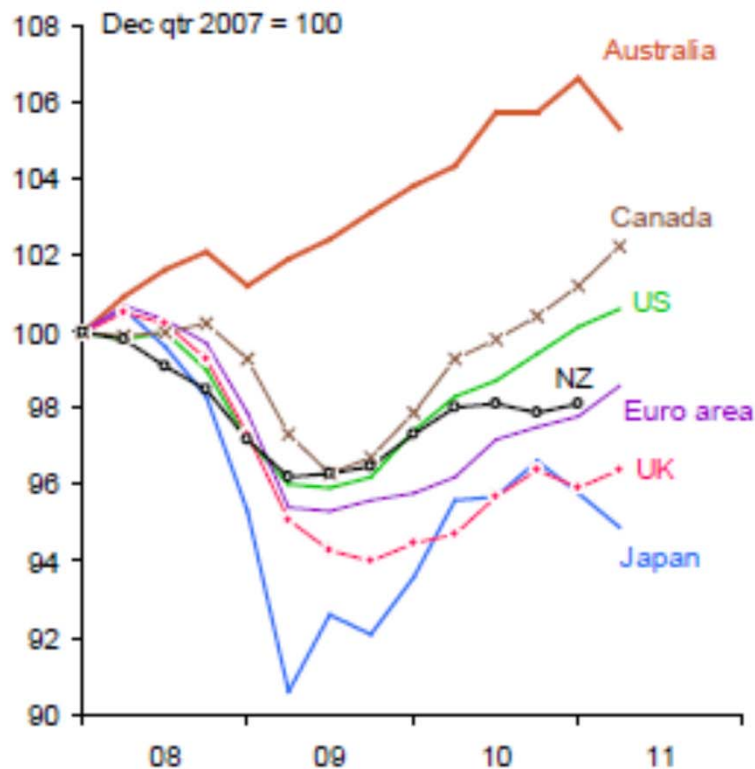
- Despite easing in recent years, Victoria has averaged solid growth of 2.8% over the past decade



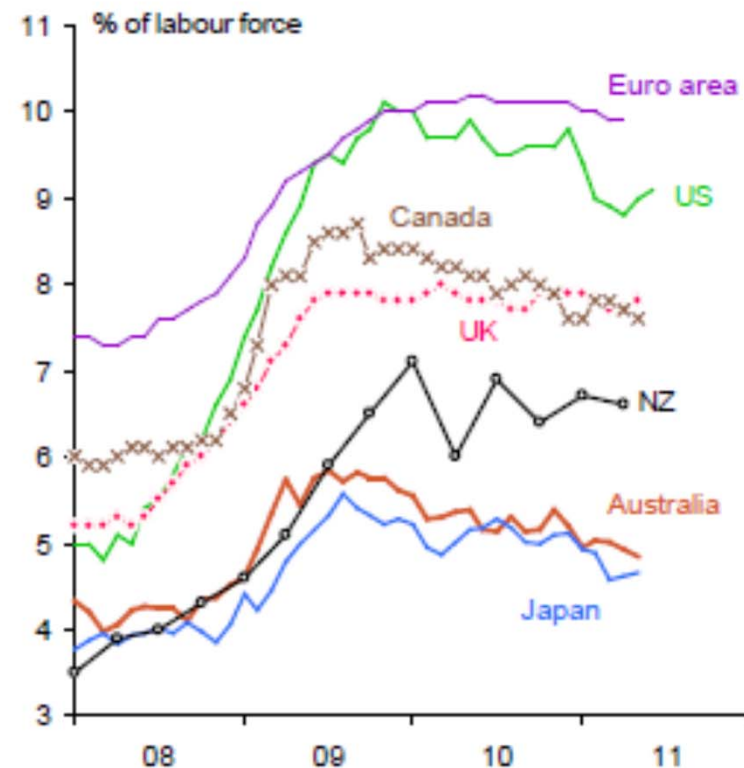
# State of the Economy

- The resources boom has driven Australia's strong economic performance

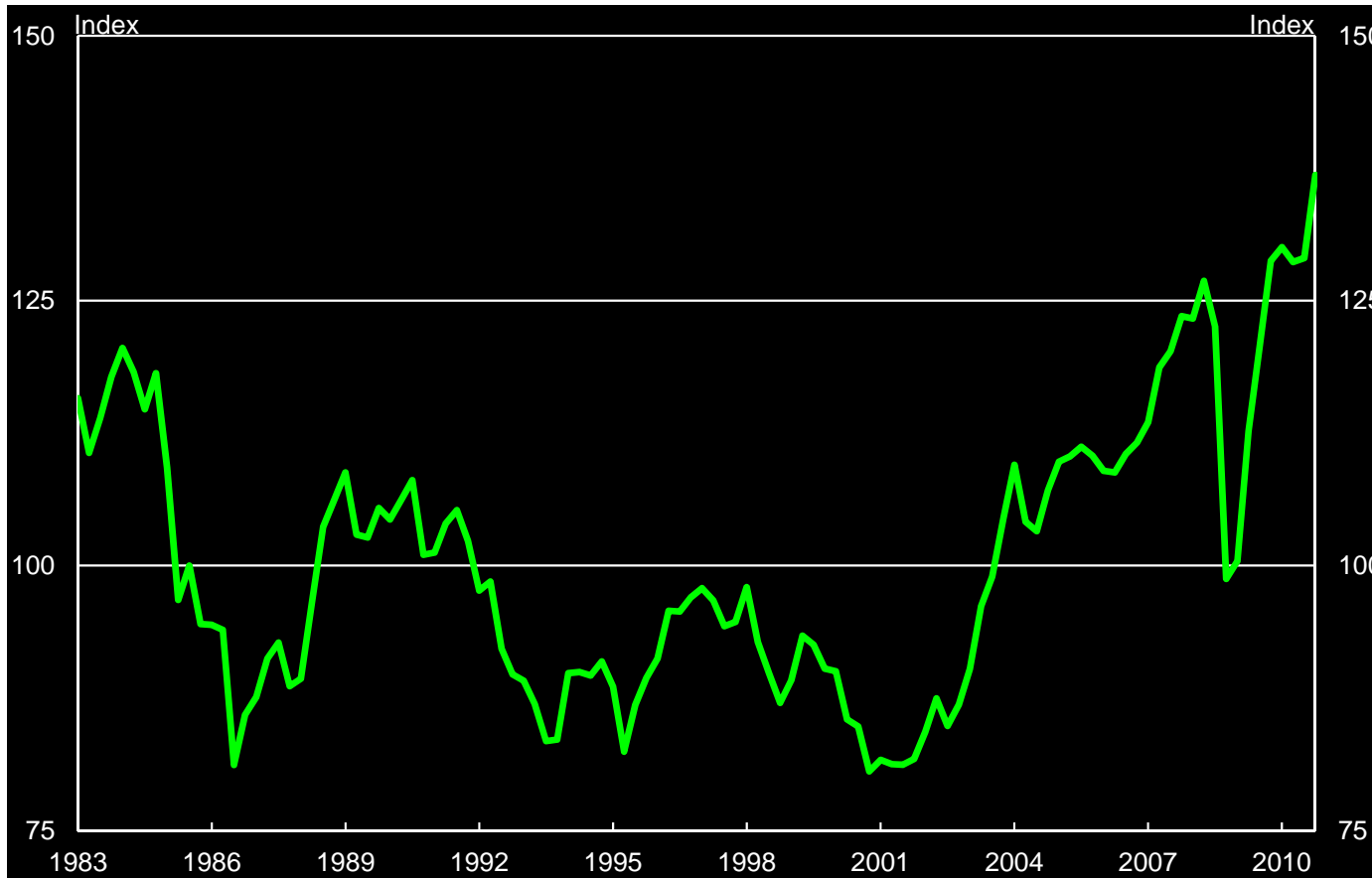
Real gross domestic product



Unemployment rate



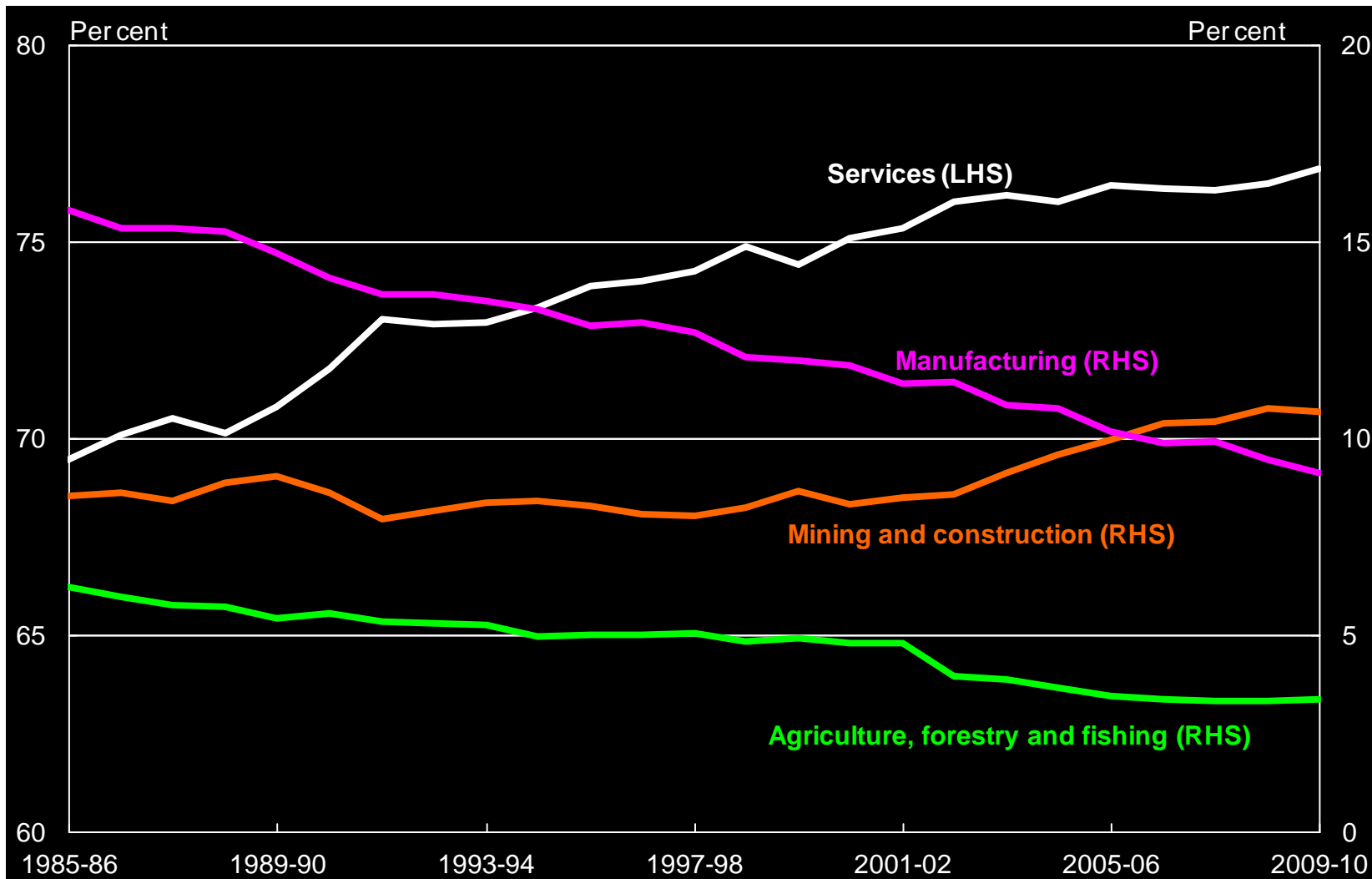
# Difficult business conditions affecting Victorian industries



**Australian real exchange rate**

Impact of the resources boom has increased the value of the Australian Dollar, affecting key Victorian industries

# Challenges for manufacturing in Victoria



# Focus on enterprise-level competitiveness via engagement

## Business Engagement

**Competitiveness & Productivity improvements**

Business Engagement

### Identification of Issues

Regulation

Skills and Training

Infrastructure

Transport & Logistics

Export Assessment

Procurement

Investment Facilitation

Analysis

Policy Development

Regulation

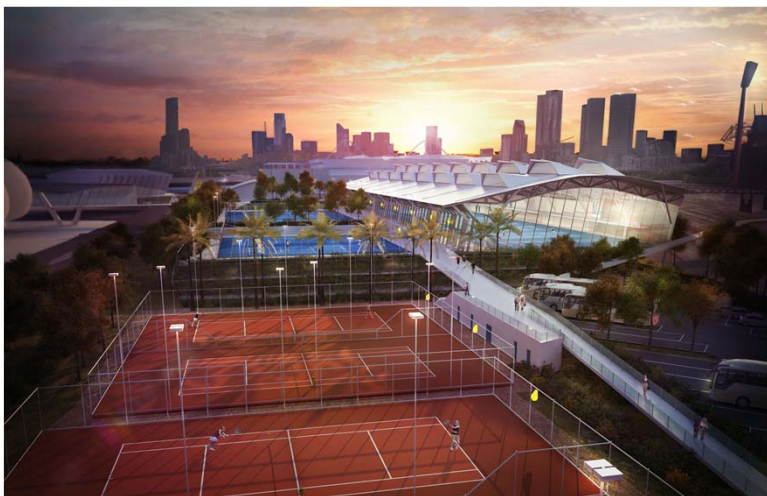
Program Design

# Major Projects Victoria

## Melbourne Park Redevelopment



- Part of \$1 billion Masterplan
- Stage 1 - \$363 million
  - Early Works – commenced in 2010
  - Eastern Plaza – Watpac preferred tenderer, works commenced
  - Western Precinct – design is being developed, works expected to commence in 2012
  - Stage 1 to be completed by 2015 Australian Open



# Major Projects Victoria E-Gate Feasibility Project

- Approximately \$6 billion over 12-18 years
- Housing for up to 12,000 residents
- 200,000m<sup>2</sup> of commercial and retail space
- Public facilities and public transport connections

