

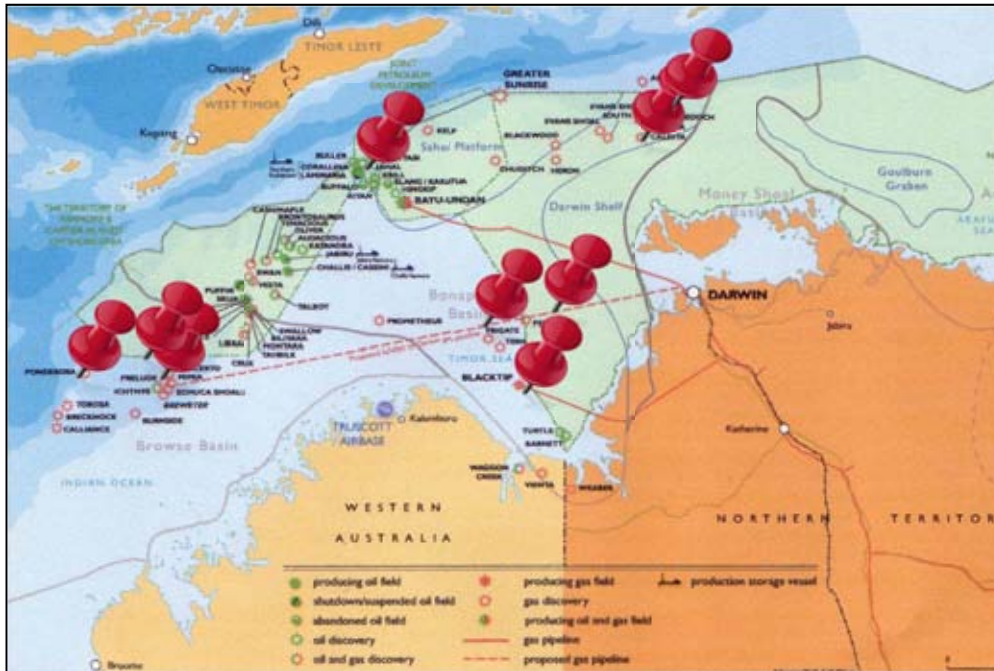


Kevin Peters
General Manager
Northern Territory

Industry Capability Network
(ICN)

Northern Territory

Oil & Gas



ConocoPhillips

- LNG shutdown every 3 years, approx \$300-400m overall expenditure
- *Poseidon* gas field in Browse Basin
- *Barossa* and *Caldita* fields
- DLNG (existing Darwin LNG plant) expansion is not entirely dependent on Woodside

INPEX

- Approx US\$30 billion, US\$12 billion Onshore
- Currently in FEED, FID expected Q4 2011
- Investments already made in training facility
- *Ichthys* field possible 40 year lifespan
- Project packages released on ICN Gateway

Eni

- *Kitan* Oil Field estimated 30 - 40 million bbl in recoverable reserves
- Sub sea pipe work commenced in April 2010
- Bluewater Energy Services LLC will supply the FPSO 'Glas Down'
- Project packages released on ICN Gateway

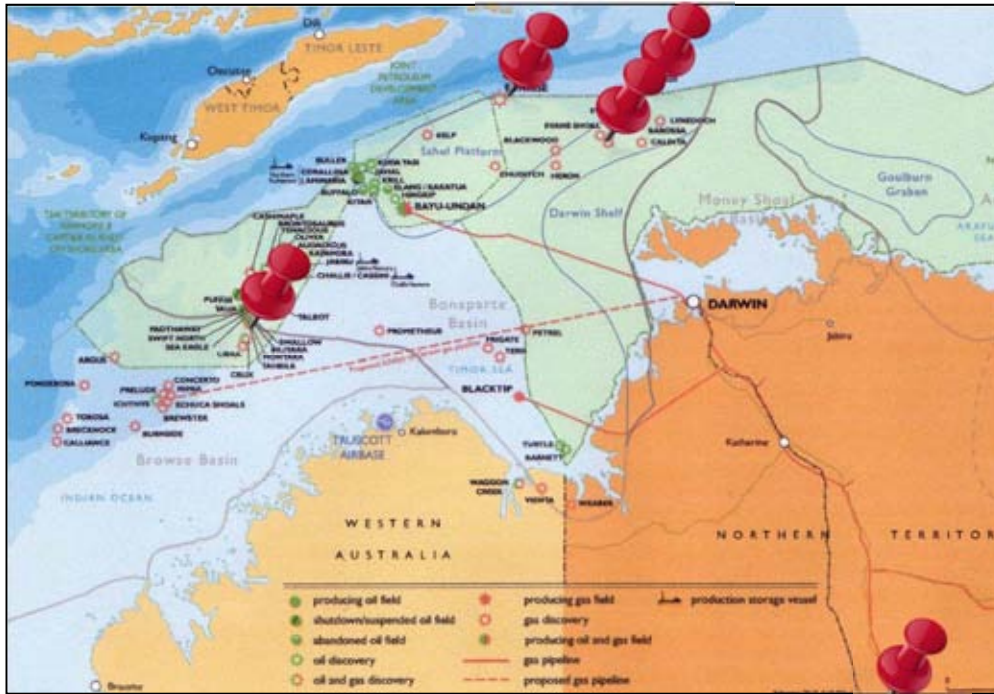
Shell

- *Prelude* FLNG Project (World first)
- Proposal to utilise Darwin as Logistics / Maintenance Base
- Darwin based packages - ICN Gateway

GDF SUEZ

- *Petrel, Tern, Frigate* fields recently purchased from Santos
- MET ocean studies underway
- Floating LNG
- FID 3-4 years away

Oil & Gas



INPEX

- Abadi FLNG
- FEED underway
- Inside Indonesian waters but potential for Darwin service and supply

PTTEP

- Montara Gas Field
- Service and supplied ex Darwin
- Exploration program underway
- Suggestion of FLNG

Woodside

- *Greater Sunrise* field, decision made in favour of floating platform (FLNG)
- Disappointing, but supply and service opportunities ex Darwin should abound

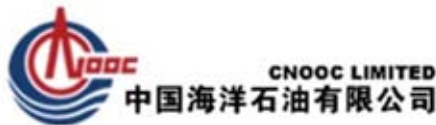
Magellan Petroleum Australia

- Purchased 40% of *Evans Shoal* from Santos
- Jointly owned with Asaka Gas 10%, SDA 25% & Petronas 25%
- Gas Field

Falcon Oil and Gas

- Beetaloo Basin in Central Australia
- Significant oil and gas estimated at 2 billion barrels oil and 62 TCF
- Hess Corporation have signed a Participation Agreement for acquisition of an interest.

Other companies who have been conducting studies in the Browse, Bonaparte and Money Shoal Basin areas include:



Outlook –

A potential of up to 10 floating LNG platforms within the next 10 years

Opportunities available -

- Exploration
- Construction
- Operation
- Shut down

Mining

ERA (Uranium)

- Ranger pit expansion
- Awaiting EIS approval from NTG

HNC (Copper)

- Batchelor Browns deposit upgrade delayed due to HNC buying out MIM minerals
- Under care and maintenance

BHP Billiton (Manganese)

- Expanding their Groote Eylandt Operations

Territory Resources (Iron Ore)

- Helene 3 and Helene 5 pits opened at Frances Creek
- New crushing and screening plant

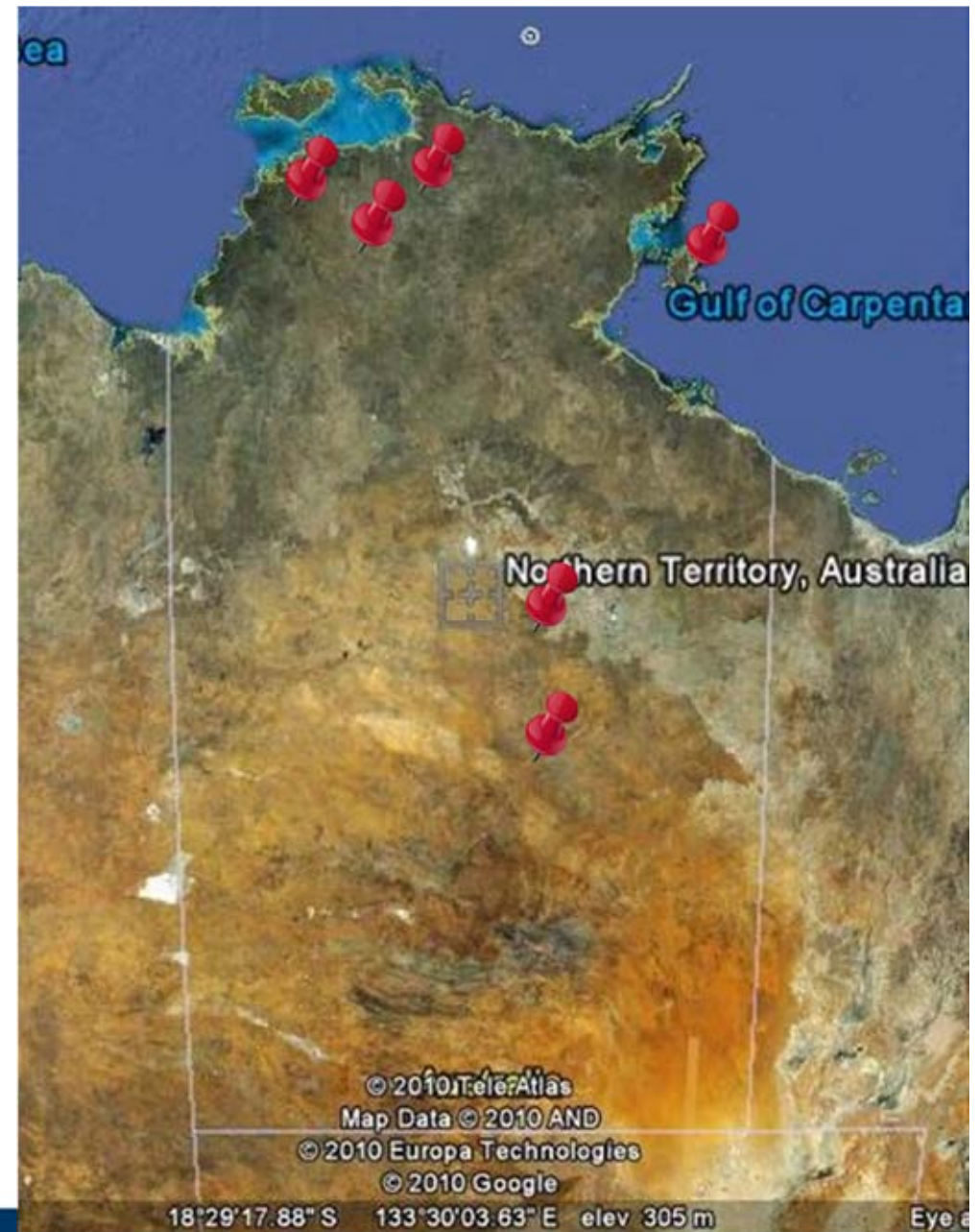
OM Holdings (Manganese)

- Bootu Creek plant opened Dec 09
- Tourang pit and new hall road opened
- Estimated \$13m

Emmerson Resources, West Gold

Excalibur (Gold)

- Exploration for gold in Tennant Creek



Mining

Minemakers (Phosphate)

- Wonarah Mine approx \$200m
- EIS has been approved
- Expected commencement 2013

Arafura Resources (Rare Earths)

- Nolens Bore
- Still seeking finance
- Refinery likely to be established in Whyalla

Central Petroleum (Oil, Gas & Coal)

- The Company's operating portfolio of some 235,000 km² includes most of the available prospective acreage in Central Australia, including the Pedirka and Amadeus Basins.

Sherwin Iron (Iron Ore)

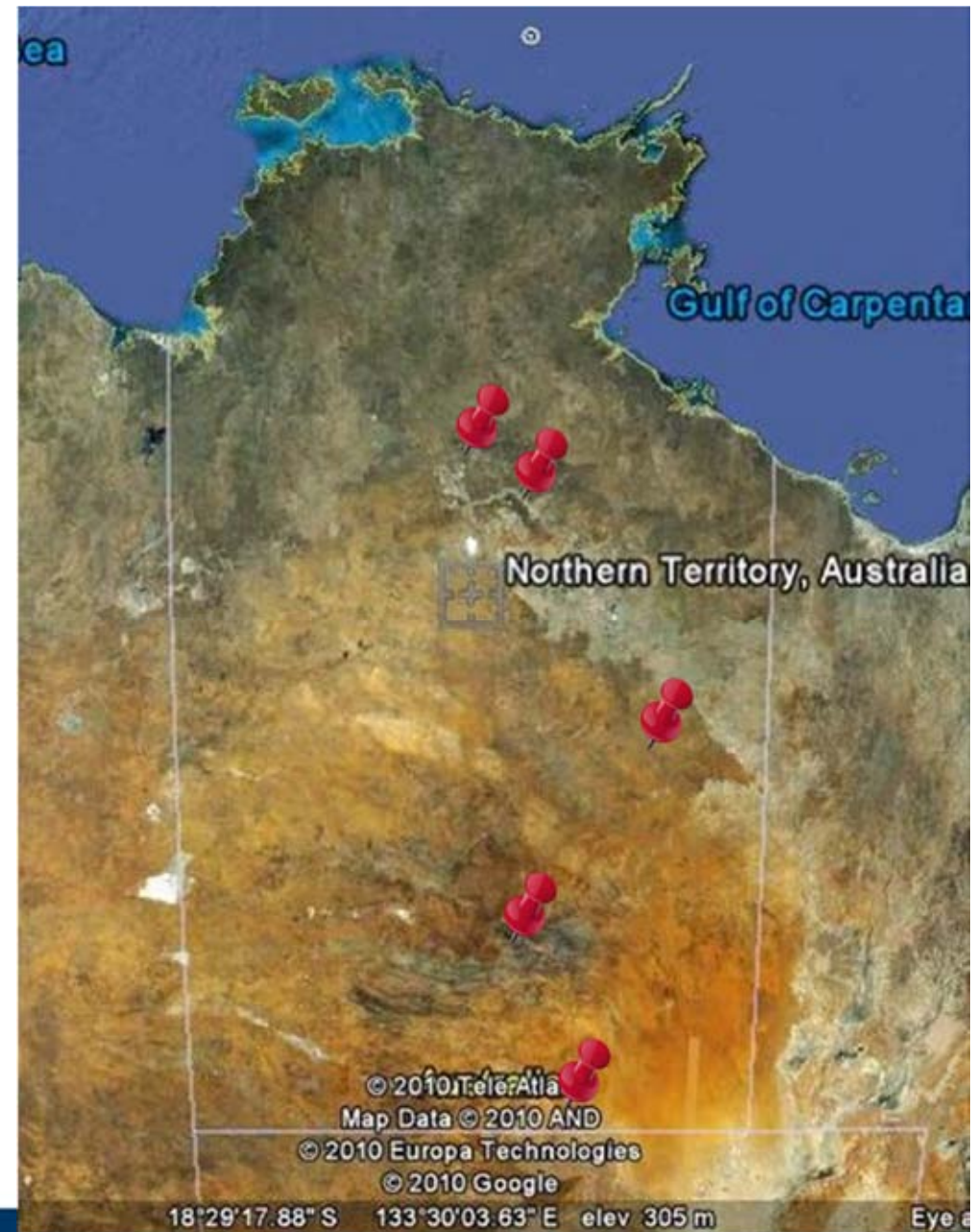
- Roper River
- Commencement of mine construction expected early 2012

Western Desert Resources (Iron Ore)

- Roper River

Vista Gold (Gold)

- Mt Todd
- Prospects recently upgraded
- Aiming at Q4 2012 commencement



Search

Find an ICN office

Quick links

[Home](#)
[ICN Web Site](#)
[Privacy](#)
[Terms of use](#)

| [More](#)

Supplier search

looking for suppliers?

- find local suppliers who can compete with the best
- to browse by region, select from the list below
- to search using 'capability' keywords, enter a search term and click the search button

Choose a region...

...keywords (eg, ball bearings)

Search ▶

Project search

looking for projects?

- register your interest in projects that suit your capability
- to browse by industry or region select from the lists
- to see all projects, just click the search button

Browse industry directories

Browse projects by region

Search ▶

Company profiles

your company

- [create a company profile](#) so our industry consultants can recommend you to projects
- log in to update your details
- register to receive notification when new work packages are added
- **Project Gateway users:** you may need to use "Forgot Password" when logging in.

Login ▶

Featured projects

Territory Alliance [\[View Full Details\]](#)

The Giant Magellan Telescope [\[View Full Details\]](#)

Quick links

[Home](#)
[ICN Web Site](#)
[Privacy](#)
[Terms of use](#)

Expressions of Interest **Ichthys Onshore Facilities**

[Register](#)

Project Owner: JKC Joint Venture (INPEX Onshore Plant 'FEED' Contractor)
Project Value: n/a
Project Status: In Progress
Location: NT, Australia



Associated Projects:
[Ichthys LNG Project](#)
[Ichthys Onshore Facilities](#)
[Ichthys Offshore Production Facilities](#)

The gas will be processed through a two train 8.4 t/a LNG processing plant. This production rate represents the average rate over the life of the Project. Total annual production will vary from year to year depending on factors such as the composition of the gas from the reservoir and the duration and frequency of maintenance activities.

The onshore processing plant will also produce approximately 1.6 million tonnes per annum of LPG and 15 000 barrels per day of condensate which is carried to the plant with the gas stream.

Contracted Services Facilities

Work Packages

Currently Listing 77 Work Packages:

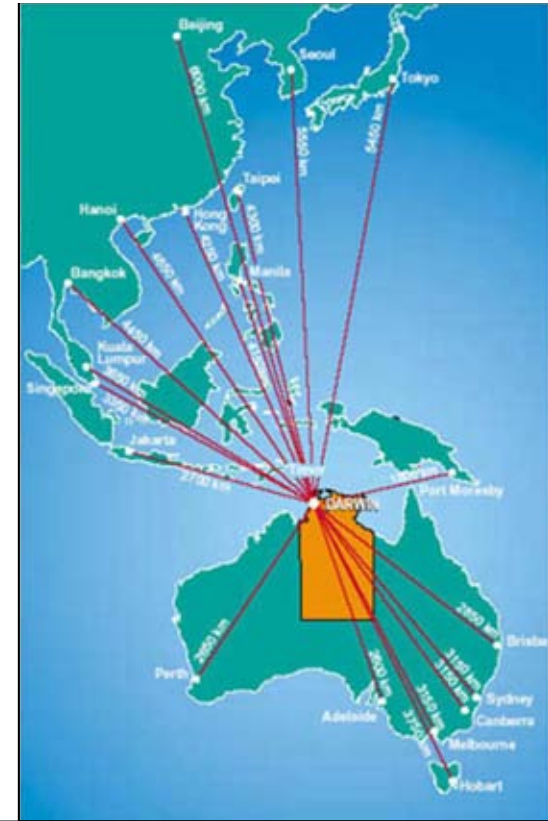
Tier 1: Complete package or service for this work package required. Tier 2: Partial package or service for this work package allowed.

Work Package	Status	Applications Open	Tier 1 Closes	Tier 2 Closes	PDF
* PROJECT NOTICES *					
PROJECT ACCOMMODATION VILLAGE INDUSTRY BRIEFING	Closed	25 Aug 2010	1 Sep 2010	15 Dec 2010	
COMBUSTION EQUIPMENT					
ENCLOSED FLARE (incl. Flame Front Generator) (AUD \$5 - \$10 m range)	Open	26 Jan 2010	23 Feb 2010	1 Jan 2012	
HEATING MEDIUM FURNACE PACKAGE (AUD \$10 - \$50 m range)	Open	26 Jan 2010	23 Feb 2010	1 Jan 2012	
INCINERATOR PACKAGES (Incinerator, Heater, Stack, Blower) (AUD \$1 - \$5m range)	Open	26 Jan 2010	23 Feb 2010	1 Jan 2012	
LIQUID FLARE (AUD \$1 - \$5m range)	Open	26 Jan 2010	23 Feb 2010	1 Jan 2012	

Port & Rail Expansion

(Reference - Nation Building Program)

- Approx \$325 million worth of works to be undertaken on port infrastructure with an expected completion date of 2013
- Expression of Interest Re Port Expansion
- Early investigation into dedicated bulk loading facility
- The sale of the Darwin – Adelaide rail line to Genesee & Wyoming has raised confidence in the ability to inject the required capital into urgently needed upgrades to facilitate the movement of an expanding bulk goods market
 - Bulk product is now coming from not only from NT mining operations but also some from SA



Defence

- 10% of all Defence personnel in Australia reside in the NT
 - Defence presence in the Northern Territory has increased from 6223 in 1992 to 13 165 in 2008.
- Four projects approx \$246 million either pending or underway
 - RAAF base Redevelopment stage 2. \$49.8m
 - Robertson Barracks Redevelopment expected completion in 2011. New and upgraded facilities for training, emergency response, working accommodation and equipment support. \$72.1m
 - RAAF Tindal base Redevelopment stage 5 expected completion in 2011. \$58.7m
 - Tindal Airborne Early Warning and Control Facility expected completion in 2011. \$64.2m
- LEAP Accommodation approx \$230m
- Defence Housing upgrades
- New strike fighter facility upgrade
- Northern Australian Defence upgrades



Darwin Prison - Northern Territory New Secure Facilities PPP project (NTSF)

- Consists of an 800 bed prison, 36 bed Mental Health and Behavioural Management Facility, goods stores, transitional accommodation, 50 bed Supported Accommodation Programme Centre, dog squad facilities and a horticultural training facility.
- The project is being procured under the Public Private Partnership (PPP) model and three consortia; Assure Partners, SeNTinel, and Axiom Corrections have been short listed
- Listed on ICN Gateway



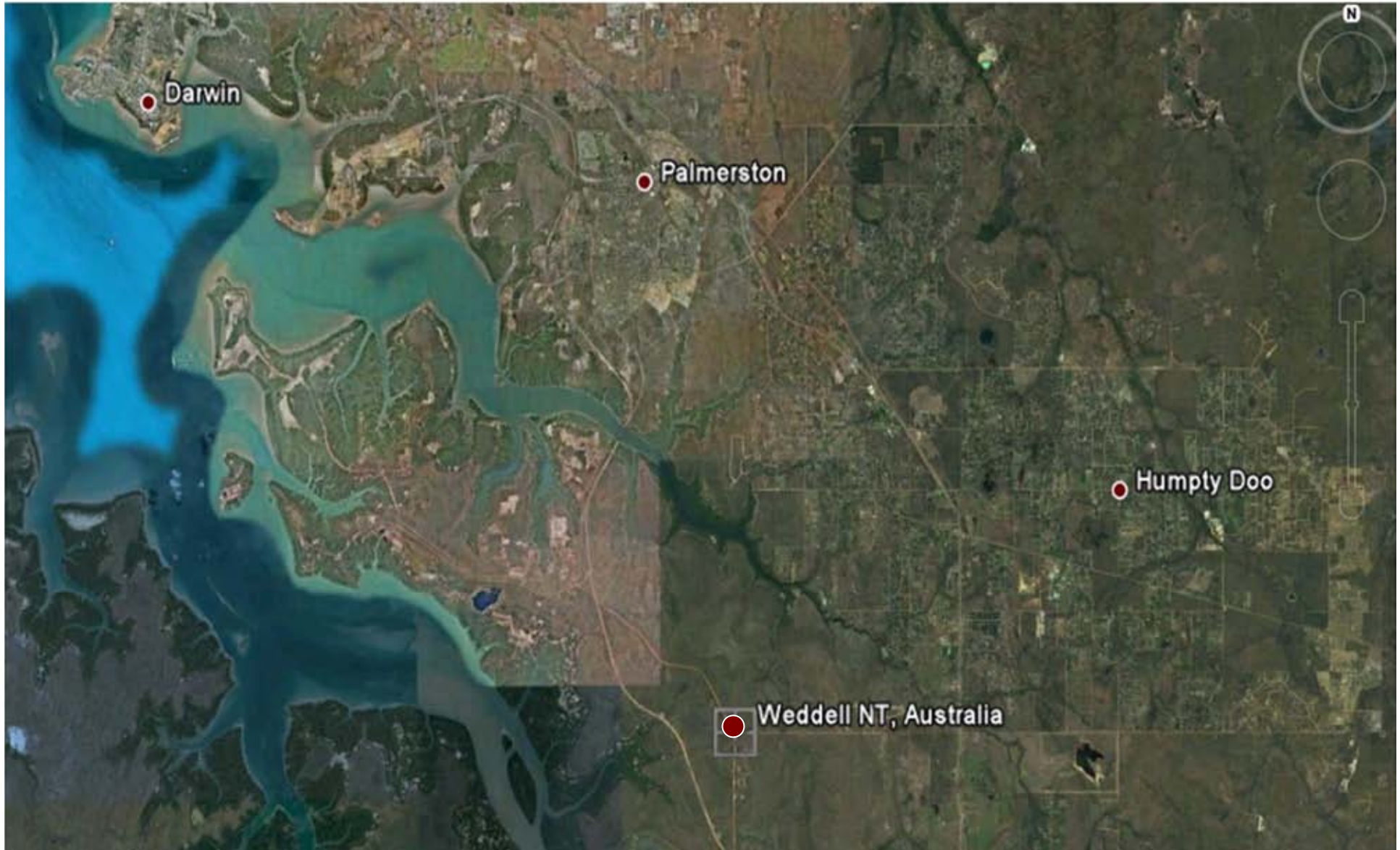
Darwin Marine Supply Base

- Aimed in part to provide support to drilling and operational platforms, the establishment of new projects and RORO facilities for a range of sectors including Defence.
- Three proponents have been short listed by the NT Government to build and operate the marine supply base.
- The facility is well placed to secure business from exploration, development and operational activities in the Arafura and Timor Seas and the Browse Basin.
- Listed on ICN Gateway



Land Release and Housing

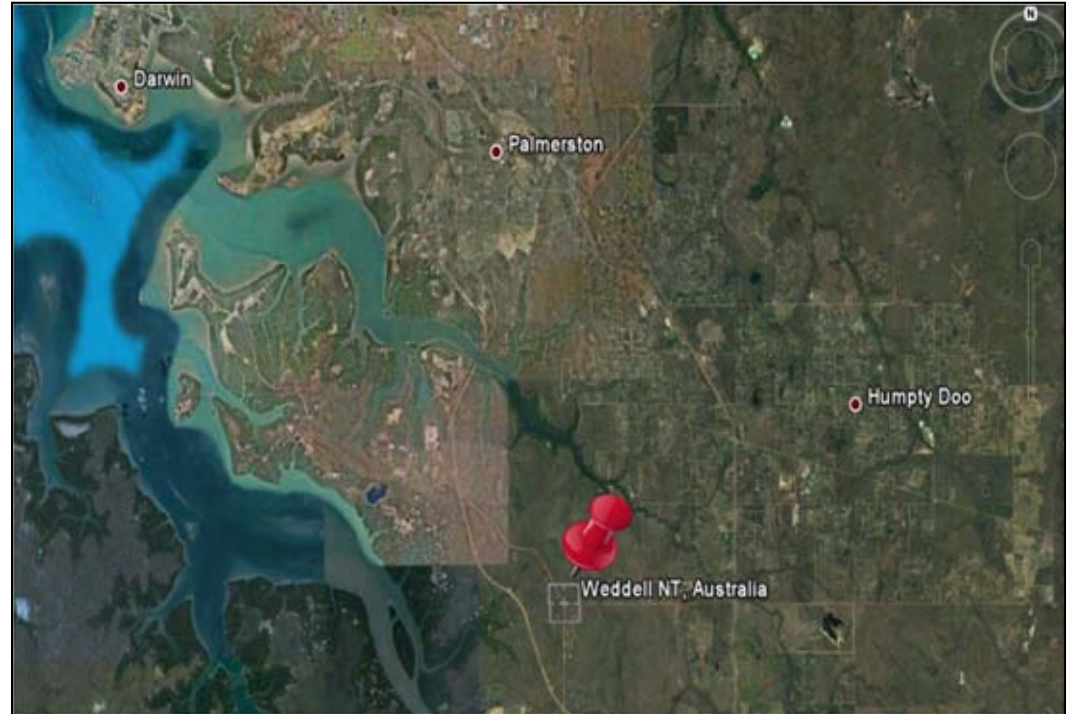
City of Weddell – The Northern Territory's 4th City



Land Release and Housing

City of Weddell

- 45km from Darwin
- 21km from Palmerston
- 10,000 lots
- 13,000 dwellings
- Cater for 50,000 people



- Planning for the development of the site is underway
- Blocks likely to be available by 2014
- New (support) commercial industries developed

Sources of further information

Territory 2030

<http://www.territory2030.nt.gov.au/>

Construction snapshot

<http://www.nt.gov.au/infrastructure/services/snapshot/>

Orestruck - Including NTG Potential Mining Projects in the NT

<http://www.nt.gov.au/d/orestruck/index.cfm?header=Ore-struck%20Home>

The Housing Industry Association – Housing to 2020

<http://nt.hia.com.au/documents/NT%20Housing%20to%202020.pdf>

Nation Building Program – Darwin Port Expansion

http://www.nationbuildingprogram.gov.au/projects/ProjectDetails.aspx?Project_id=035880-09NT-MIP

ICN NT

www.icnnt.org.au

www.icngateway.org.au

PowerWater Corporation

<http://www.powerwater.com.au/>